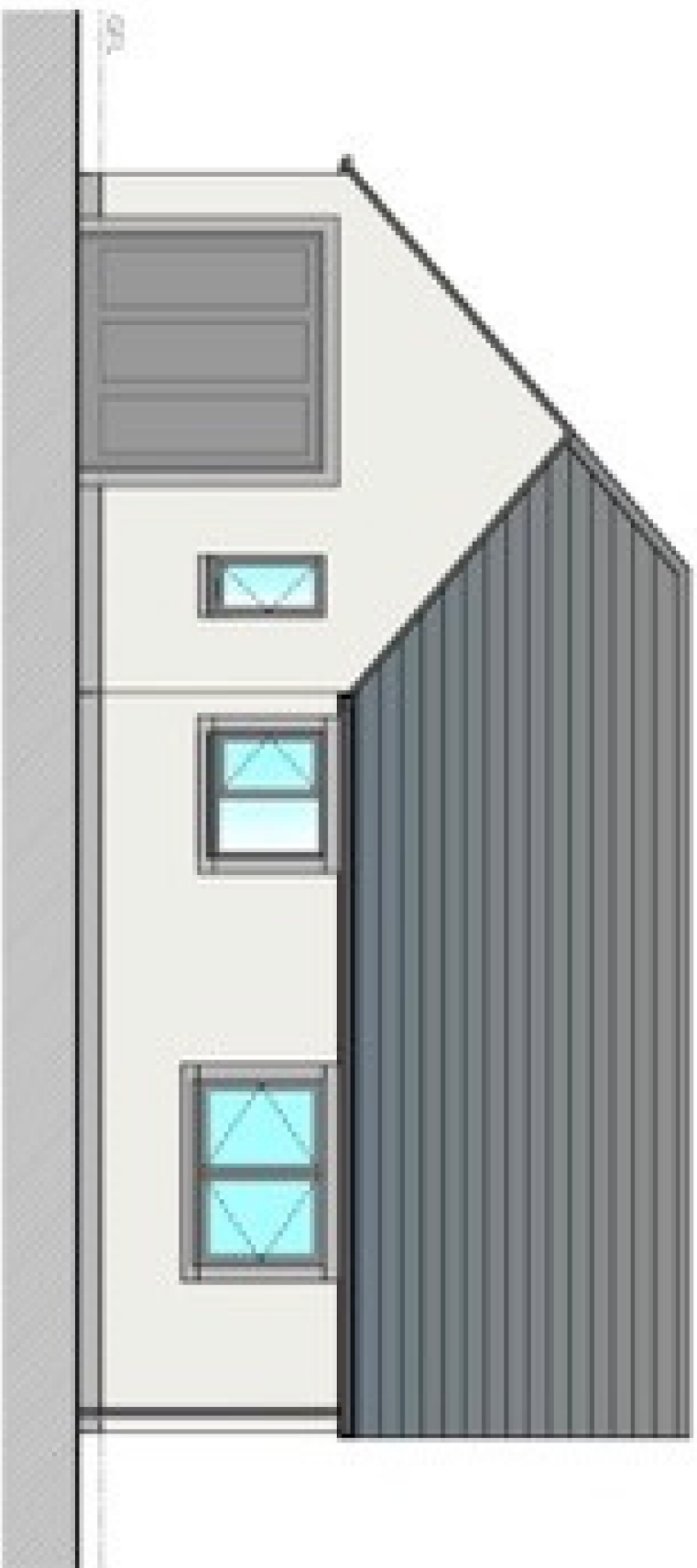




The Etrick

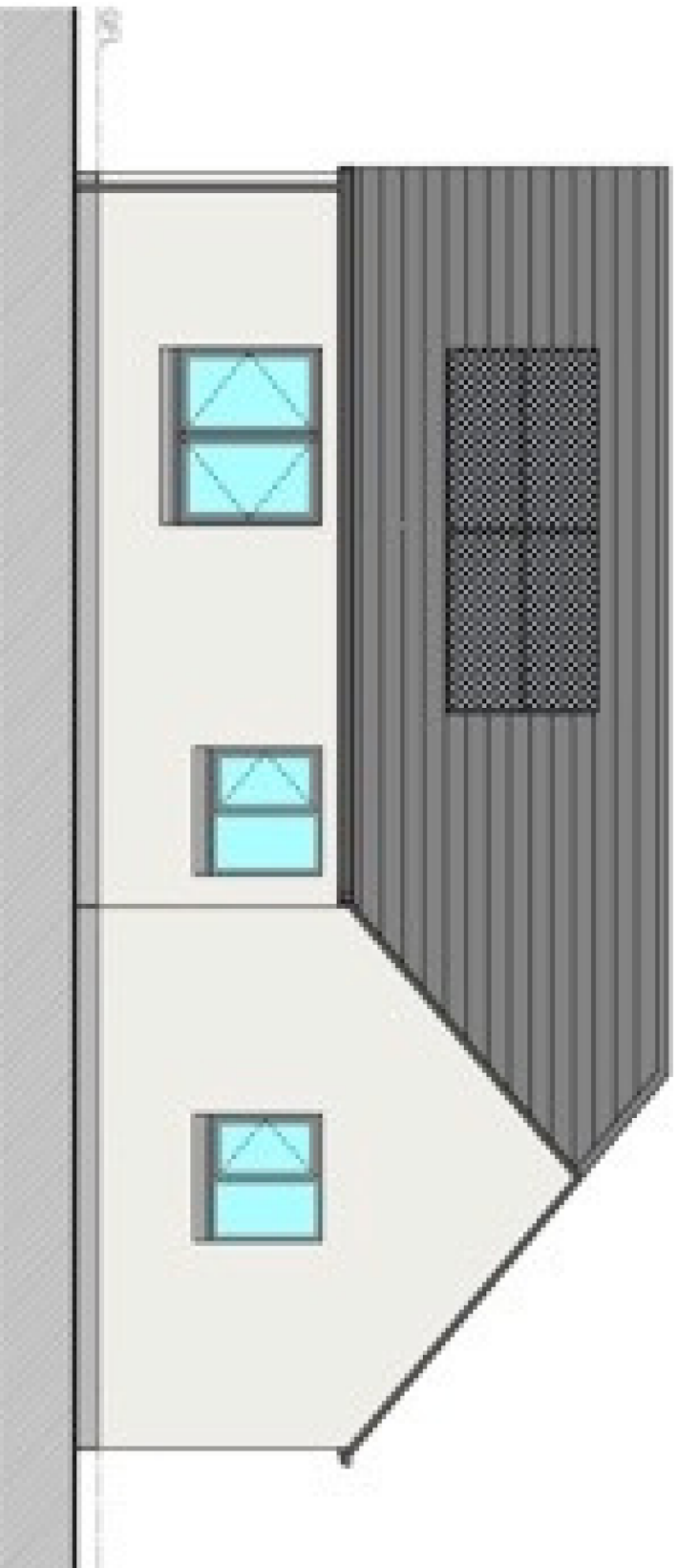


Hillside Drive, SELKIRK

**HOMES FOR
SCOTLAND**

AWARDS 2023

HOME BUILDER OF THE YEAR - SME



13 beautifully crafted homes by the Borders finest house builder

The Ettrick



GROUND FLOOR PLAN

HOUSE STYLE	ETTRICK	
Principle Rooms	Areas (sqm / sqft)	
Living / Dining	24.0 sqm	258 sqft
Kitchen	10.6 sqm	114 sqft
Utility	4.1 sqm	44 sqft
Master bedroom	14.1 sqm	152 sqft
Bedroom 2	11.7 sqm	126 sqft
Bedroom 3	8.8 sqm	95 sqft
Bathroom	4.4 sqm	47 sqft
En-suite	3.9 sqm	42 sqft
Hall	14.3 sqm	154 sqft
Garage	14.2 sqm	153 sqft

While it is the policy of JS Crawford 3rd Generation to provide accurate information to prospective purchasers, the information contained herein shall not constitute or form part of any contract. All plans and dimensions are indicative and may not be to scale. The developers reserve the right to depart from the design layout and to amend or vary the terms of the specifications.
For further information on the detail of any particular property, please speak to a Sales Advisor.

Telephone today: 01896 822030 Visit us online at: jscrawford.co.uk

