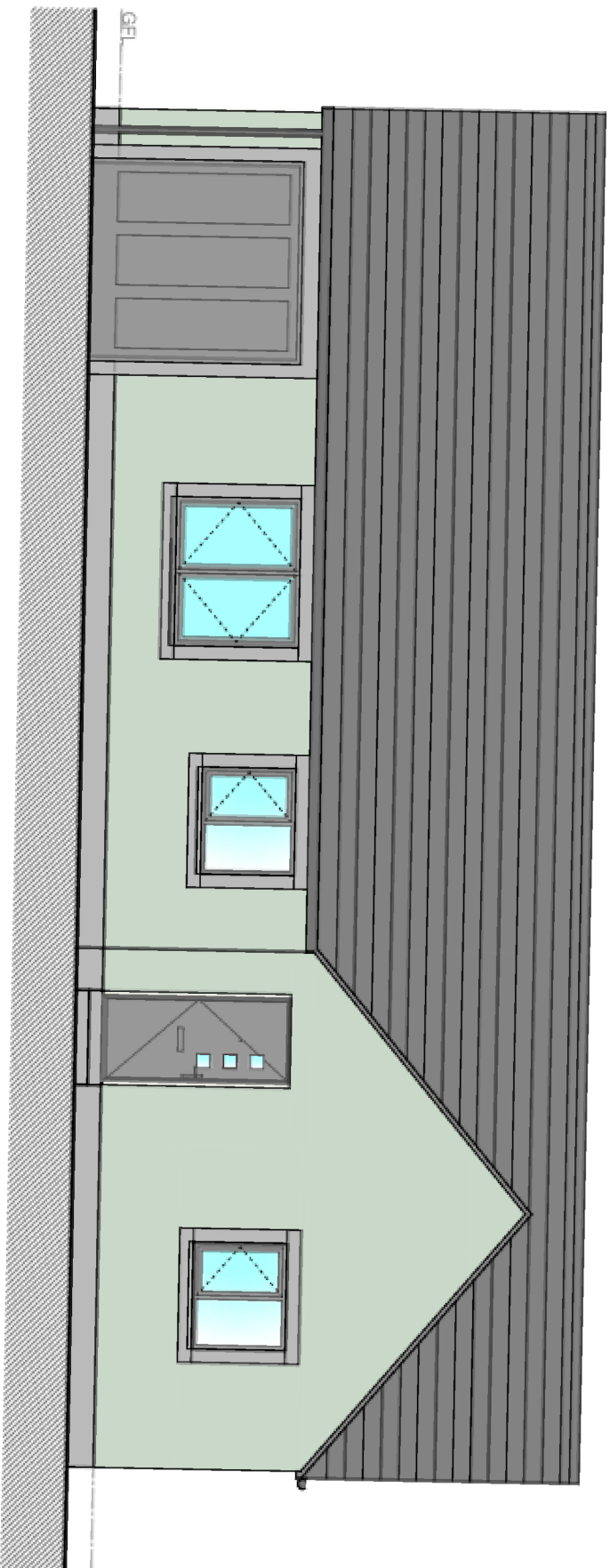




The Jedbank 2

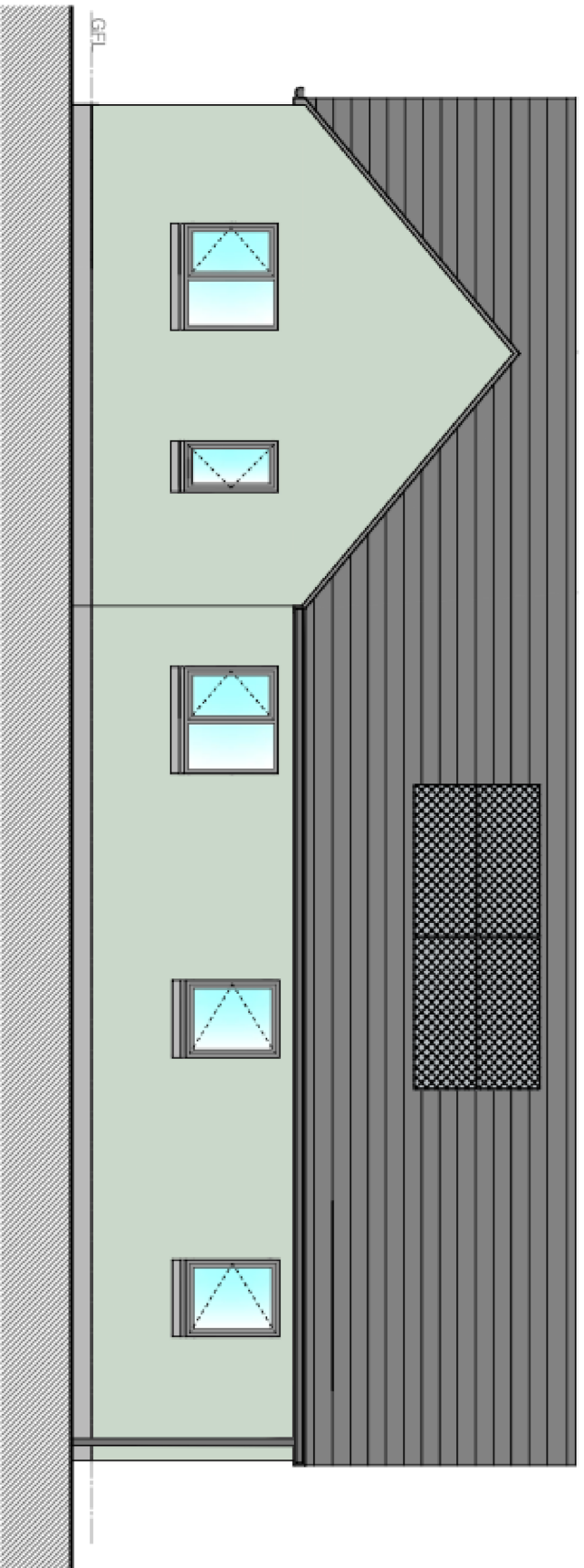


Hillside Drive, SELKIRK

**HOMES FOR
SCOTLAND**

AWARDS 2023

HOME BUILDER OF THE YEAR - SME



13 beautifully crafted homes by the Borders finest house builder

The Jedbank 2



GROUND FLOOR PLAN

HOUSE STYLE	JEDBANK 2	
Principle Rooms	Areas (sqm / sqft)	
Living / Dining	27.2 sqm	293 sqft
Kitchen	11.3 sqm	122 sqft
Utility	4.8 sqm	52 sqft
Master bedroom	14.1 sqm	152 sqft
Bedroom 2	14.5 sqm	156 sqft
Bedroom 3	12.0 sqm	129 sqft
Bathroom	3.9 sqm	42 sqft
Dressing room	3.0 sqm	32 sqft
En-suite	3.5 sqm	39 sqft
Hall	8.0 sqm	86 sqft
Garage	15.9 sqm	171 sqft

While it is the policy of JS Crawford 3rd Generation to provide accurate information to prospective purchasers, the information contained herein shall not constitute or form part of any contract. All plans and dimensions are indicative and may not be to scale. The developers reserve the right to depart from the design layout and to amend or vary the terms of the specifications.
For further information on the detail of any particular property, please speak to a Sales Advisor.

Telephone today: 01896 822030 Visit us online at: jscrawford.co.uk

Crawford
Builders

Truam le Craibaire Riallamh